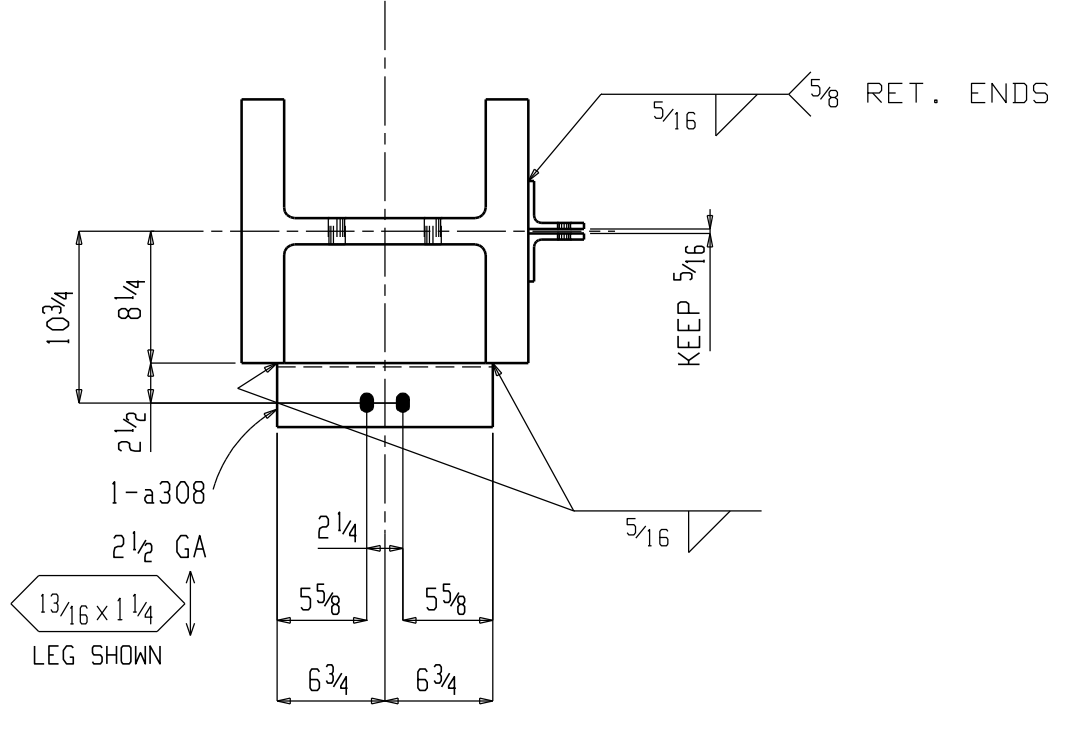


ONE COLUMN 1410C1

W 17 1/2 x 15 1/8
F 16 1/2 x 2 1/16

Section A-A
1410C1



Section B-B
1410C1

BILL OF MATERIAL

SEQ NO	SEQ	SHIP MARK	QUAN TOTAL	MATERIAL DESCRIPTION	LENGTH FT	IN	SUB MARK	MAT'L GRADE	ABM	REMARKS
14	1	1410C1	ONE	COLUMN					27-7	
				1 W14x370	29	10 1/2	1410C1	A992		S2E
				1 L4x4x1/4	1	1 1/2	a308	A36		
				2 L3 1/2 x 3 x 3/8	0	5	a98	A36		
				2 C10x30	1	9	c132	A36		
				1 PL2x20	2	2	BP15	A36		
				1 PL5/8 x 27 7/16	3	6	p320	A36		
				2 FL 1/2 x 7	1	0 9/16	p321	A36		
				6 TC 3/4 Dia A325N	0	4 1/4				2HD WASH

- SHOP NOTES:
- ALL A325SC AND A325N SHOP BOLTS ARE TO BE FULLY TENSIONED UN.
 - MARK FACE OF PLATE TO INDICATE FRAMING SIDE.
 - SEE BILL OF MATERIAL FOR MATERIAL GRADE.
 - ALL REentrant CUTS TO HAVE MIN. 1/2" RADIUS UN.
 - WELD E70 SERIES LOW HYDROGEN ELECTRODES.
 - ALL BEAMS TO BE FABRICATED WITH NATURAL CAMBER UP.
 - ALL EXTENSION DIMENSIONS ARE TO THE WORK POINT
- SYMBOL INDICATED THIS:

STEELFAB OF DUBLIN
FOR SHOP AND FIELD USE
PLOT TO FILE DATE: May 14 2004

PRINT ISSUE						STEELFAB, INC.		
DATE	NO.	TO	FOR	NO.	TO	FOR		
							902A SMITH ST. (31021) PO BOX 1748 DUBLIN, GA 31040-1748 (478) 275-9777	
SHOP PAINT: NONE						DWG. OF COLUMNS		
HOLES: 1 3/16 DIAMETER UNLESS NOTED						JOB NAME HIPPODROME PERFORMING ARTS CENTER		
BOLTS: TC 3/4 DIA. A325N (UN)						LOCATION BALTIMORE, MARYLAND		
WELD UNLESS NOTED: E70 SERIES LOW HYDROGEN						CUSTOMER WHITING TURNER		
REVISIONS						ARCHT. OR ENG. HARDY HOLZMAN PFEIFFER ASSOCIATES, LLP		
NO.	DATE	BY	DESCRIPTION			DRAWN BY: BV DETAILING CHECKED BY: DG		
						JOB NO: 21887		
						DWG. NO: 1410		

