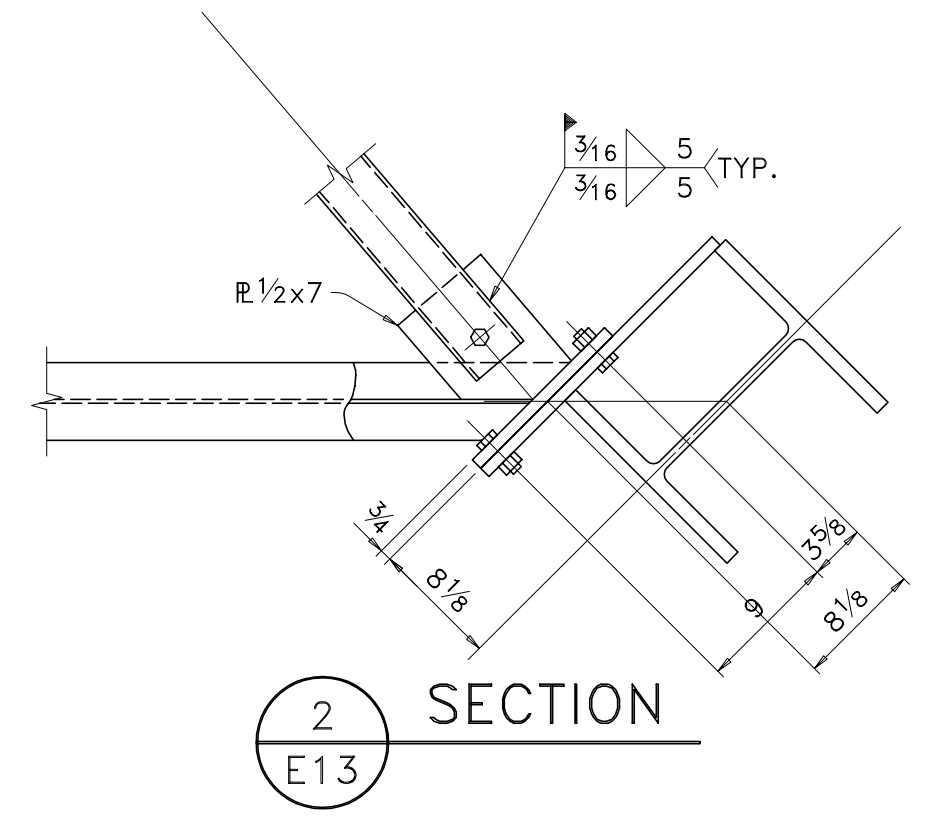
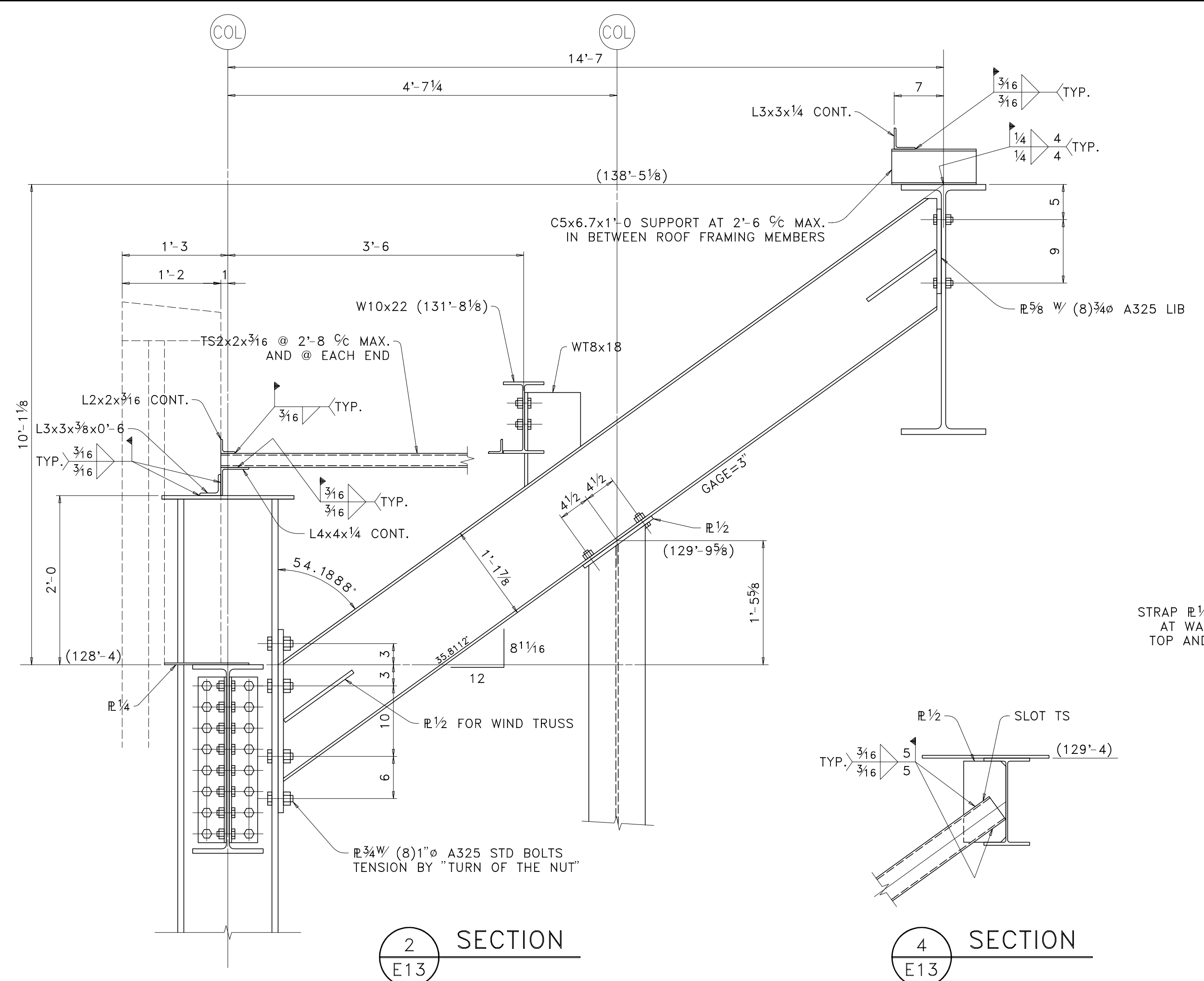


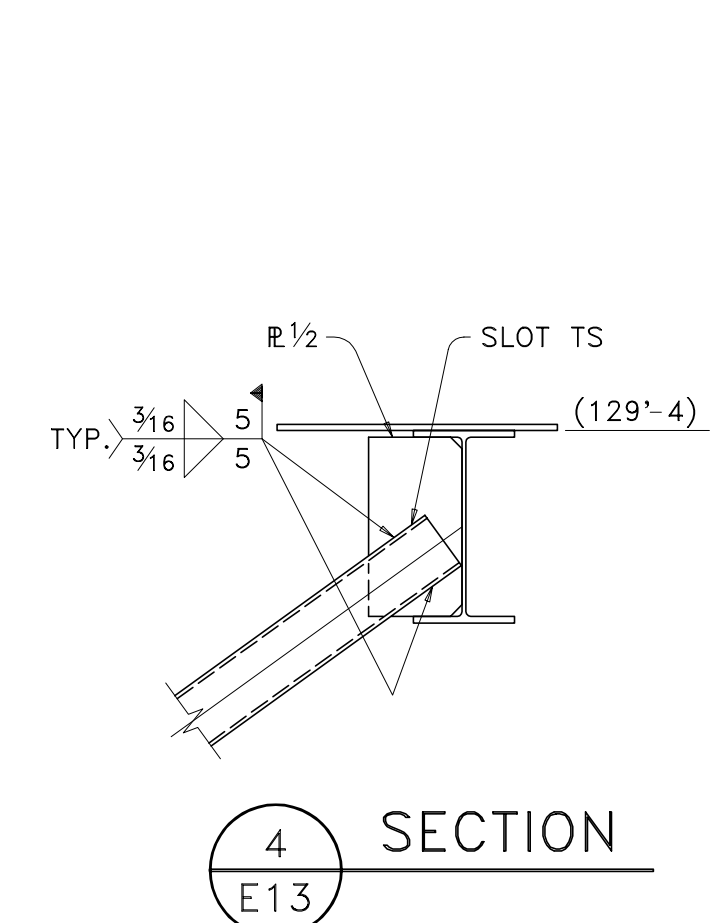
1 SECTION  
E13



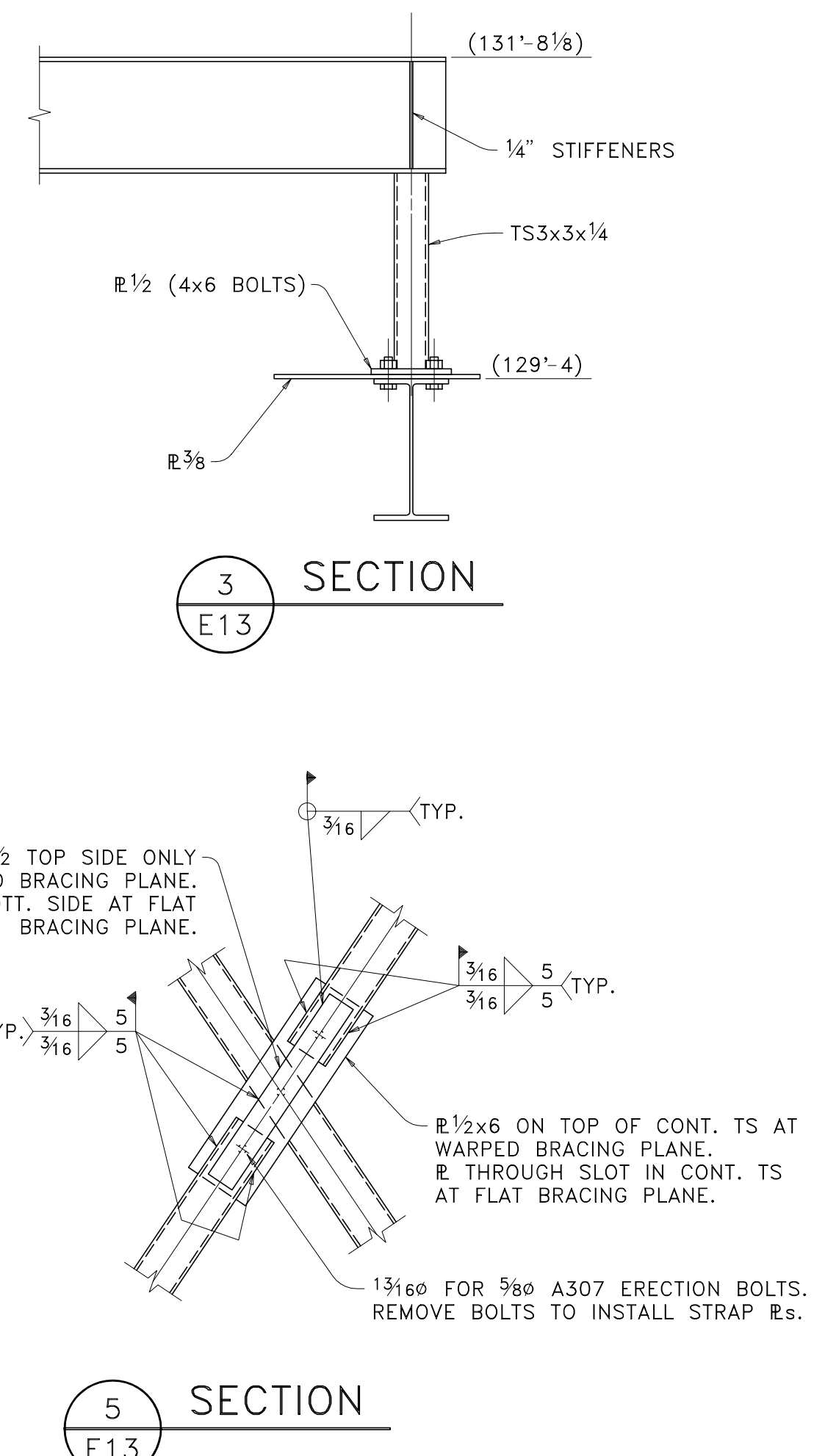
2 SECTION  
E13



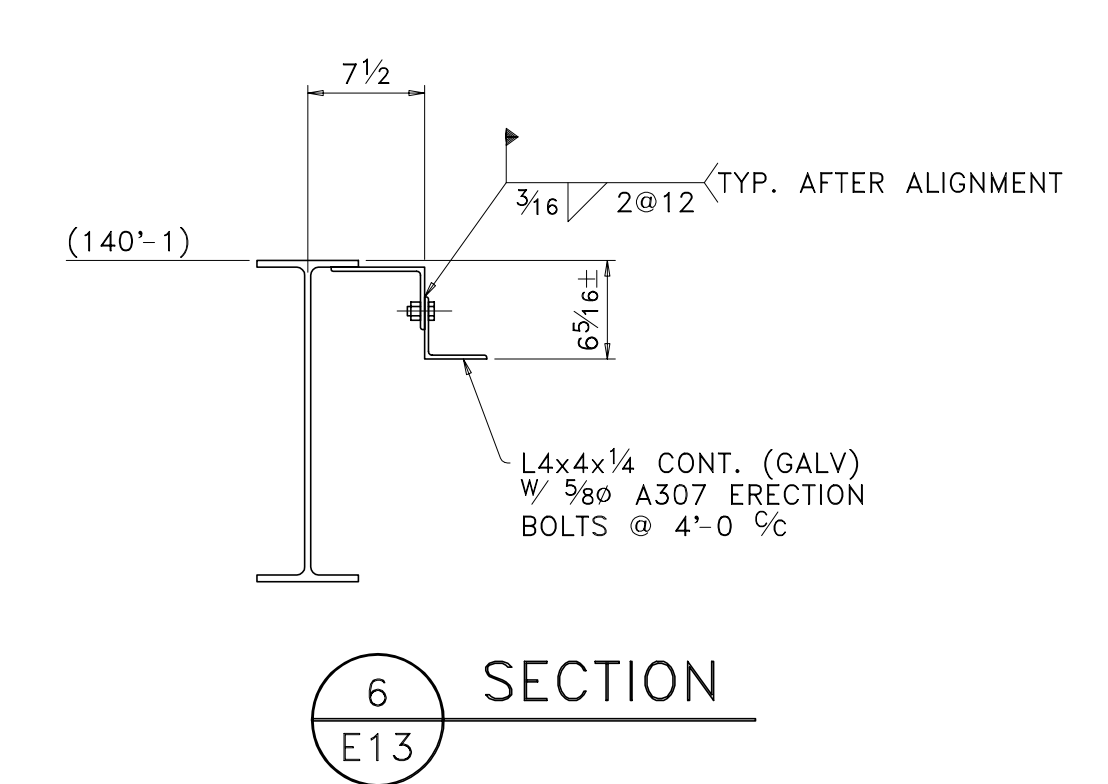
2 SECTION  
E13



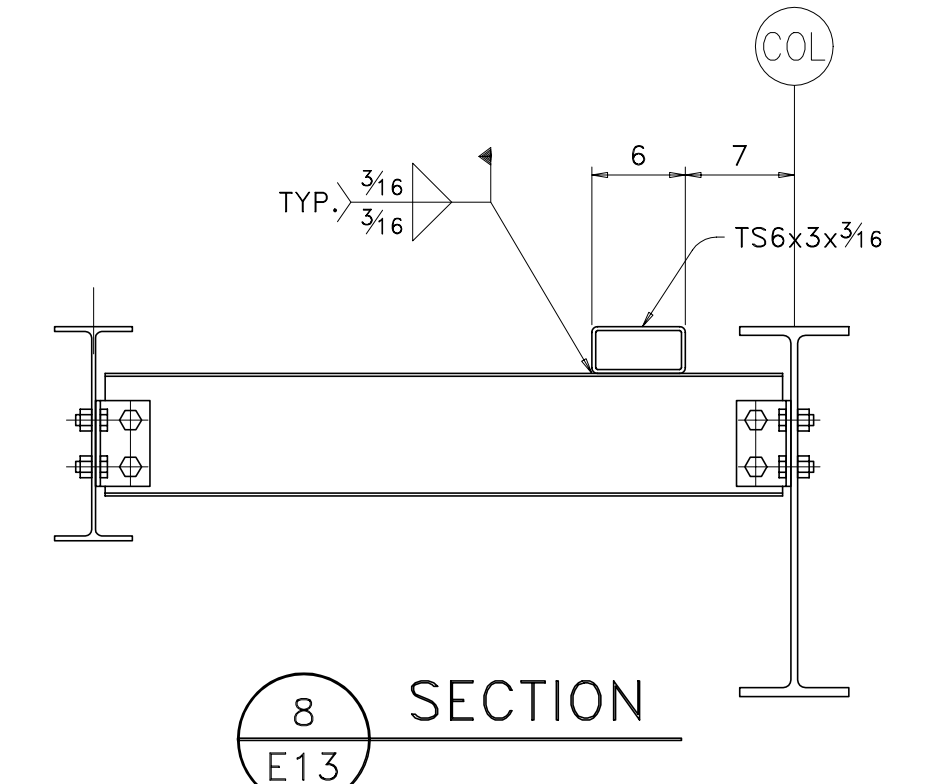
4 SECTION  
E13



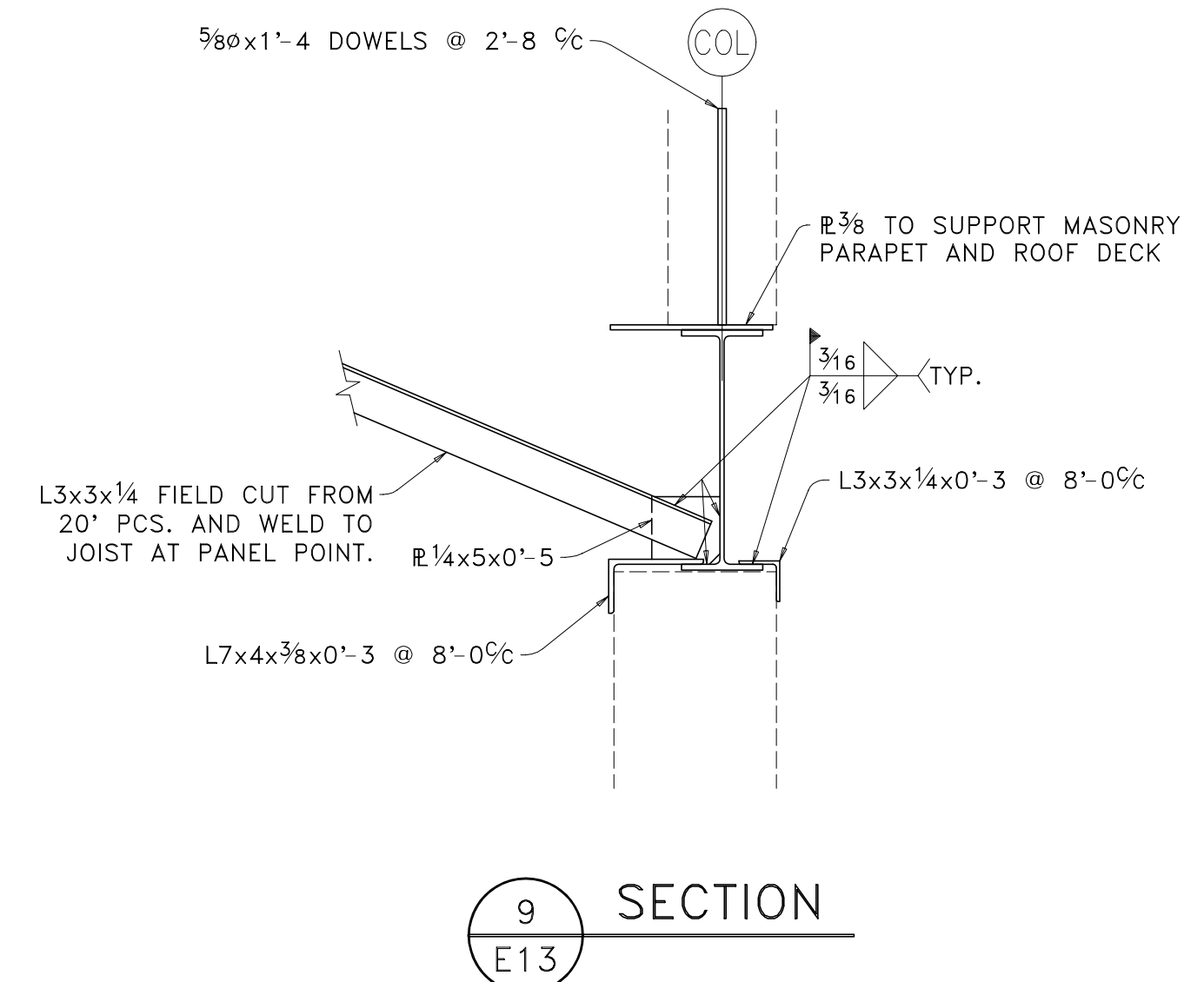
5 SECTION  
E13



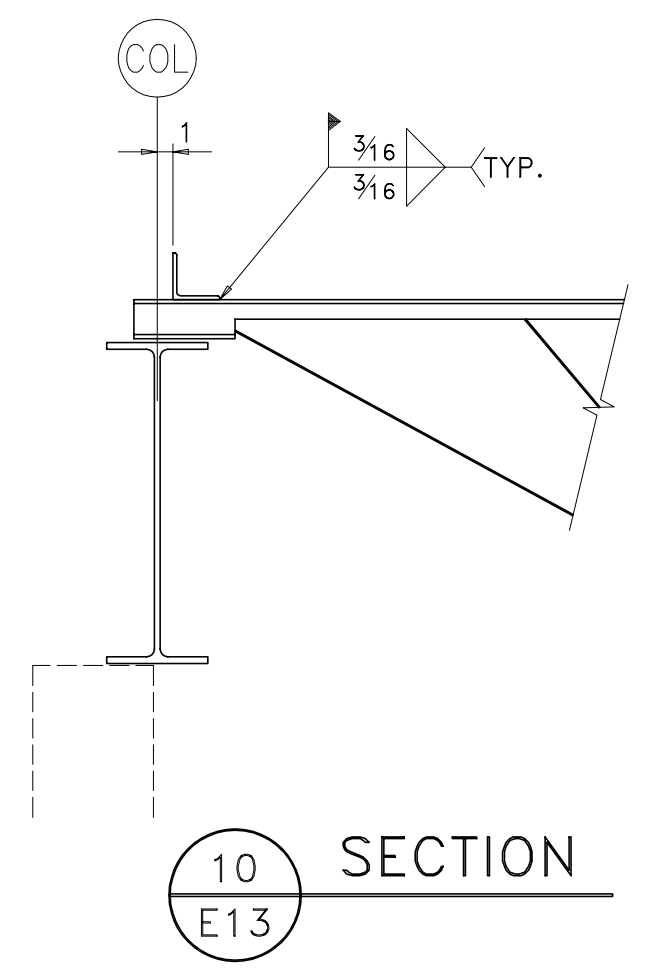
6 SECTION  
E13



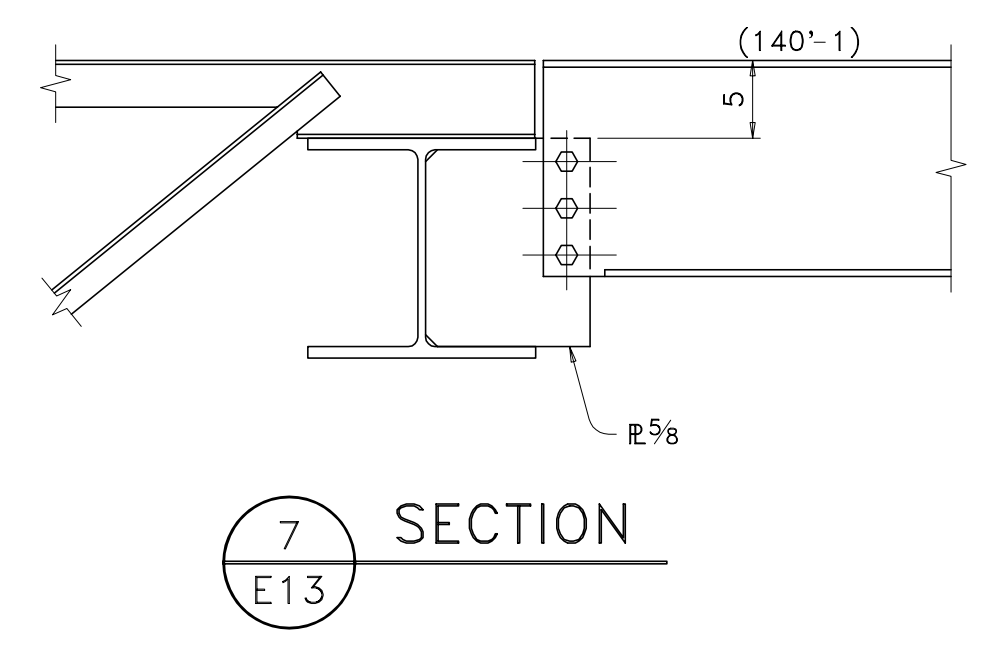
8 SECTION  
E13



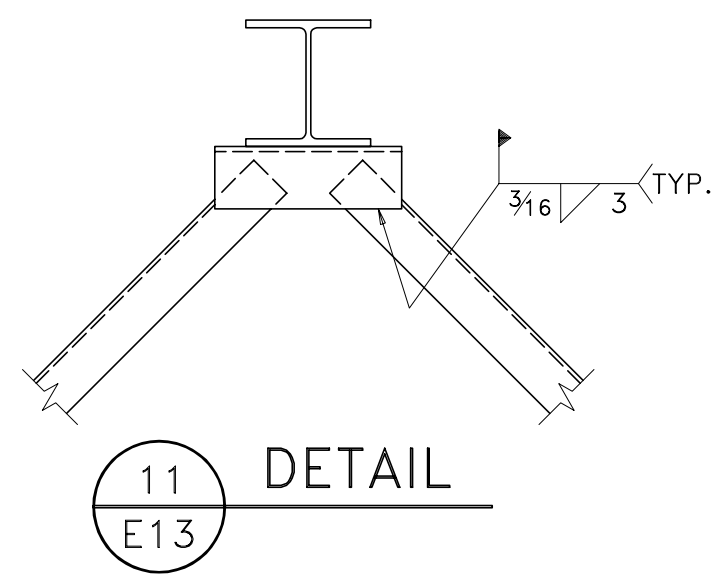
9 SECTION  
E13



10 SECTION  
E13



7 SECTION  
E13



11 DETAIL  
E13

FABARC will detail and/or design connections not furnished on design drawings; however, such connections developed by FABARC are only to accommodate fabricating shop equipment and procedures. Responsibility for design of the structure, including design of connections, shall remain with the Architect and Engineer of record. FABARC and its detailers, not being designers of steel, shall have no final design responsibilities whatsoever.

ALL ERRORS IN FABRICATION MUST BE REPORTED TO THE FABRICATOR WITHIN 24 HOURS FOR DECISION AS TO THE BEST METHOD OF CORRECTION. SHOP CHARGES WILL NOT BE ACCEPTED UNLESS OUR CONSENT IS GIVEN IN ADVANCE IN WRITING.

Fabarc Steel Supply, Inc. ANNISTON, ALABAMA									
PRINT RECORD			STRUCTURE PERIMETER CHURCH - DULUTH, GA						
QUANT.	DATE	FOR	DETAIL SECTIONS						
			CONTRACTOR HOAR CONSTRUCTION						
			OWNER PERIMETER CHURCH						
Conns. 3/4" A325 LIB / E70xx Unless Noted			ENG. OR ARCH. BMP ARCHITECTS						
Holes 13/16" Unless Noted			REVISIONS				SHOP ORDER	SHEET NO.	
Point	NONE UN		1	2	3	4	4-125	E13	
Mode	BV	Date 4/94							
Chkd	DG	Date							