

L6x6x1/2 BRACE BELOW TRUSS B.C. FIELD WELD TO TRUSS B.C. AND ATTIC BEAM EMBED. L6x6x1/2 BRACE BETWEEN TRUSS T.C. AND ROOF BEAM EMBED BOLTED TO ALLOW REMOVAL. REMOVE T.C. BRACE ONLY AS NECESSARY FOR ERECTION OF ATTIC PRECAST.

L6x6x1/2 BRACE BELOW TRUSS B.C. FIELD WELD TO TRUSS B.C. AND ATTIC BEAM EMBED TYPICAL TWO PLACES

L6x6x1/2 KICKER FROM B.C. TRUSS T4 TO UNDERSIDE OF RIDGE BEAM. REMOVE TO ALLOW ERECTION OF CENTER PRECAST AND REPLACE 609A13

5/8" CABLE "X" BRACING TYPICAL ATTACH TO TRUSS TOP CHORD WEB AND TO TRUSS VERTICAL JUST ABOVE PRECAST WITH SHACKLE AND 1" PIN

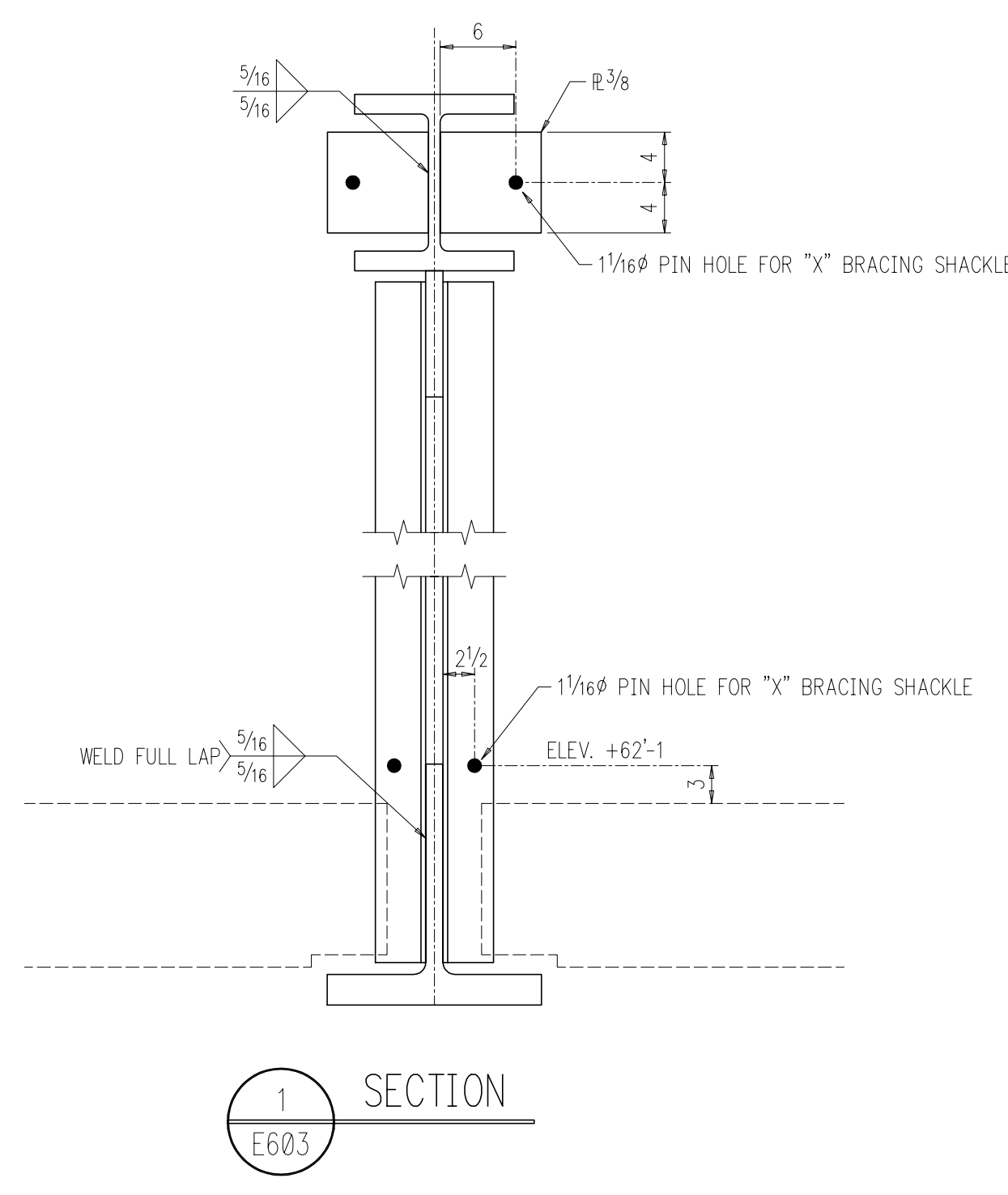
RIDGE BEAMS TO BE ERECTED BETWEEN TRUSSES. REMOVE RIDGE BEAM AS REQUIRED TO ALLOW ERECTION OF CENTER ATTIC PRECAST PANEL. REPLACE RIDGE BEAM AFTER PANEL IS IN PLACE AND BEFORE REMOVING RIDGE BEAM IN ADJACENT BAY.

L6x6x1/2 KICKER FROM B.C. TRUSS T1 TO UNDERSIDE OF RIDGE BEAM. REMOVE TO ALLOW ERECTION OF CENTER PRECAST AND REPLACE 609A12

COORDINATE ERECTION OF ROOF BEAMS WITH ERECTION OF ATTIC PRECAST

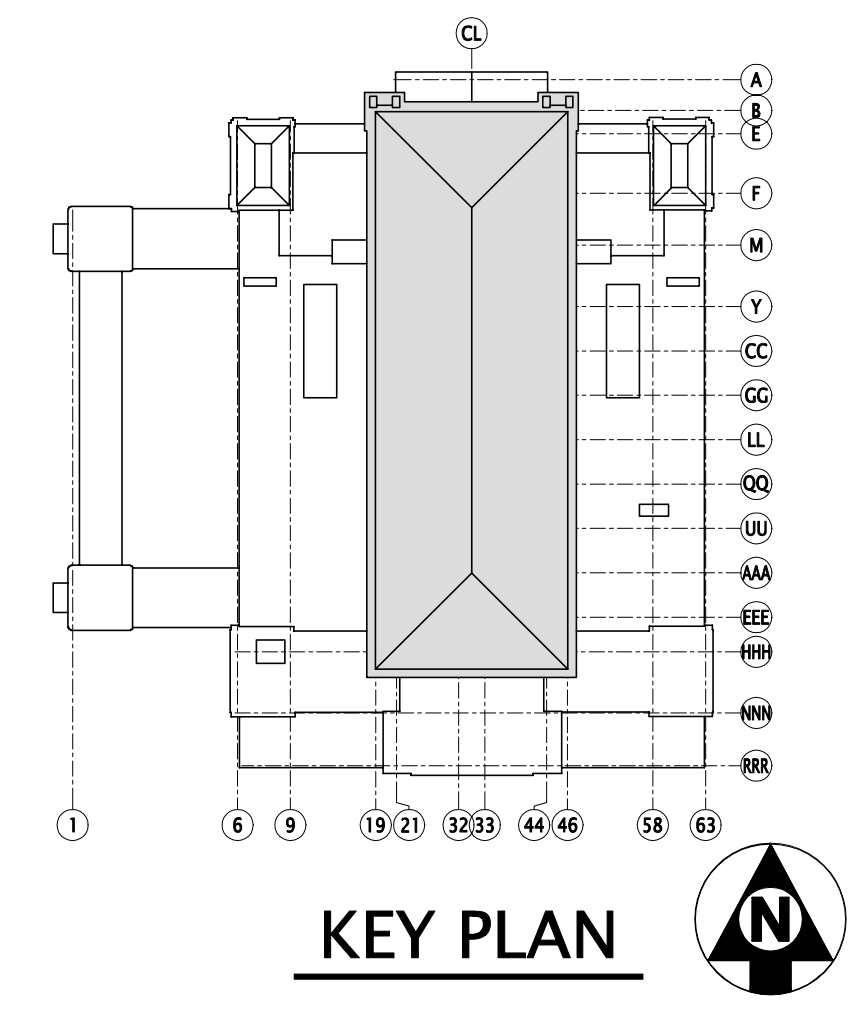
TRUSS BRACING PLAN

REF: S2.60, S2.61, S2.70, S2.71
SEQUENCES 6 (ATTIC) AND 7 (ROOF)



1 SECTION
E603

2 SECTION
E603



KEY PLAN

FabArc Steel Supply, Inc.
111 MEADOW LANE
OXFORD, AL. 36203

ALL ERRORS IN FABRICATION MUST BE REPORTED TO THE FABRICATOR WITHIN 24 HOURS FOR DECISION AS TO THE BEST METHOD OF CORRECTION. BACK-CHARGES WILL NOT BE ACCEPTED UNLESS OUR CONSENT IS GIVEN IN ADVANCE IN WRITING.

PRINT RECORD			REVISIONS			JOB		
DATE	QUAN.	FOR	REV	DATE	BY	DESCRIPTION	LOCATION	SCHERMERHORN SYMPHONY CENTER
							Nashville, TN	
							American Constructors	
							Earl Swenson Associates, Inc.	
							DRAWN BV DATE 6/04 CK'D DG DATE 6/04	
							JOB NO:	4-111
							DWG. NO:	E603