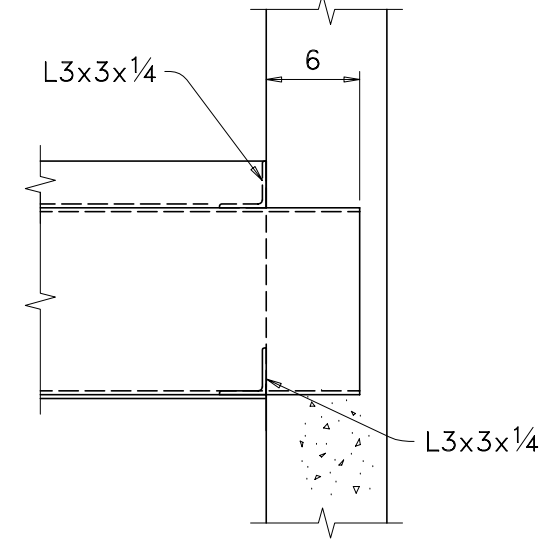
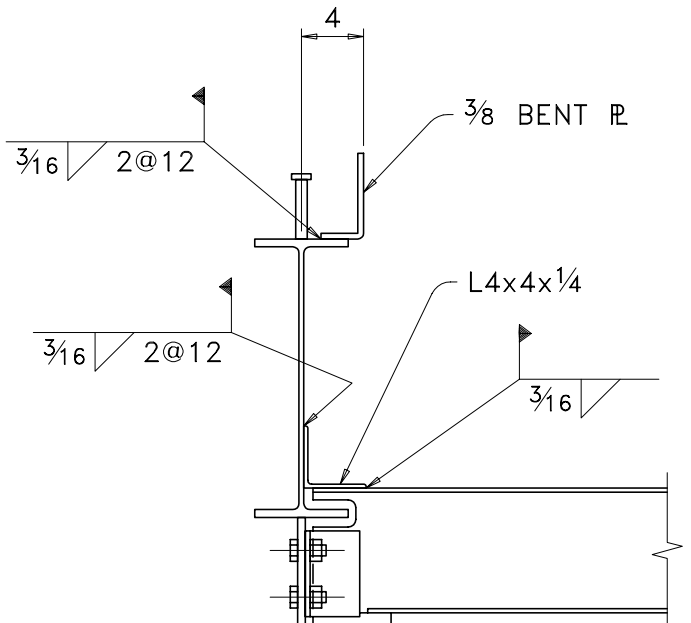


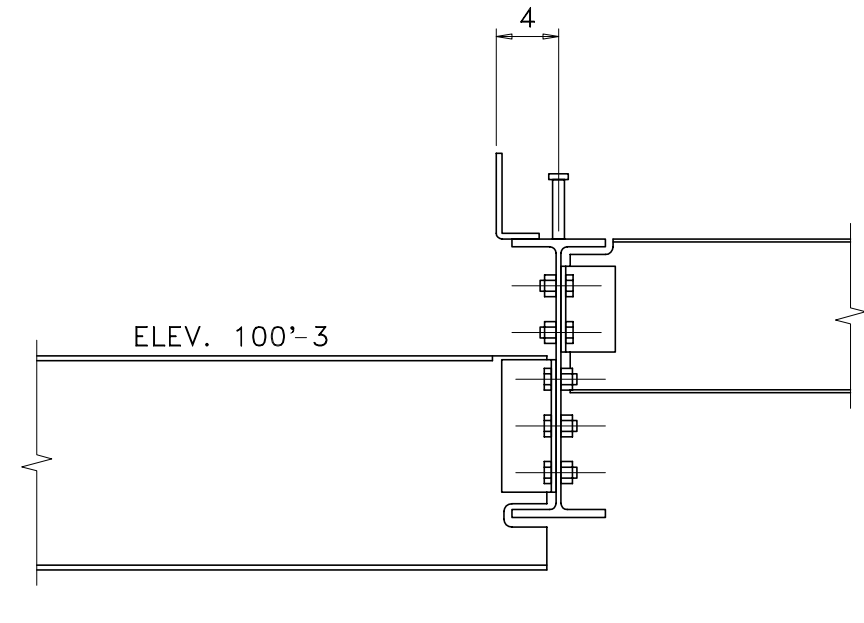
1 SECTION
E9



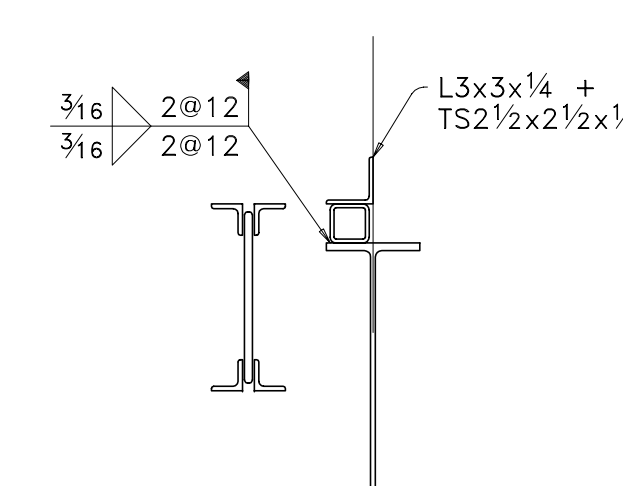
3 SECTION
E9



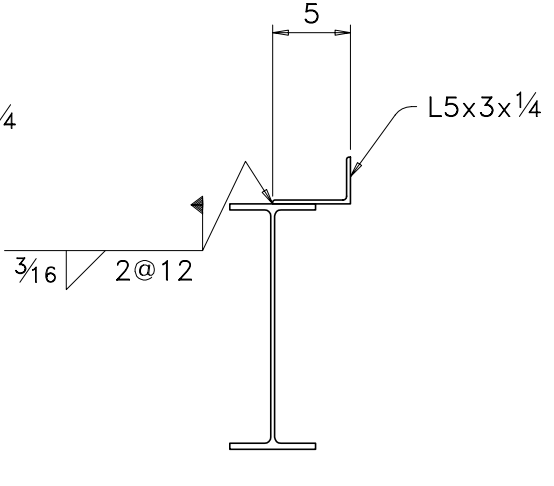
4 SECTION
E9



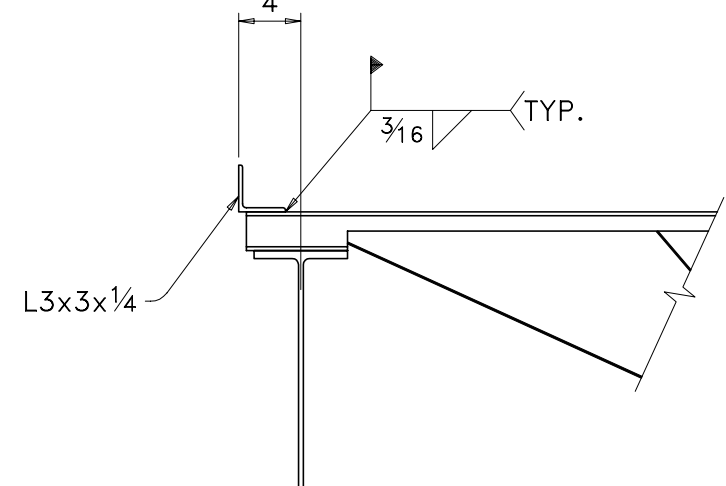
5 SECTION
E9



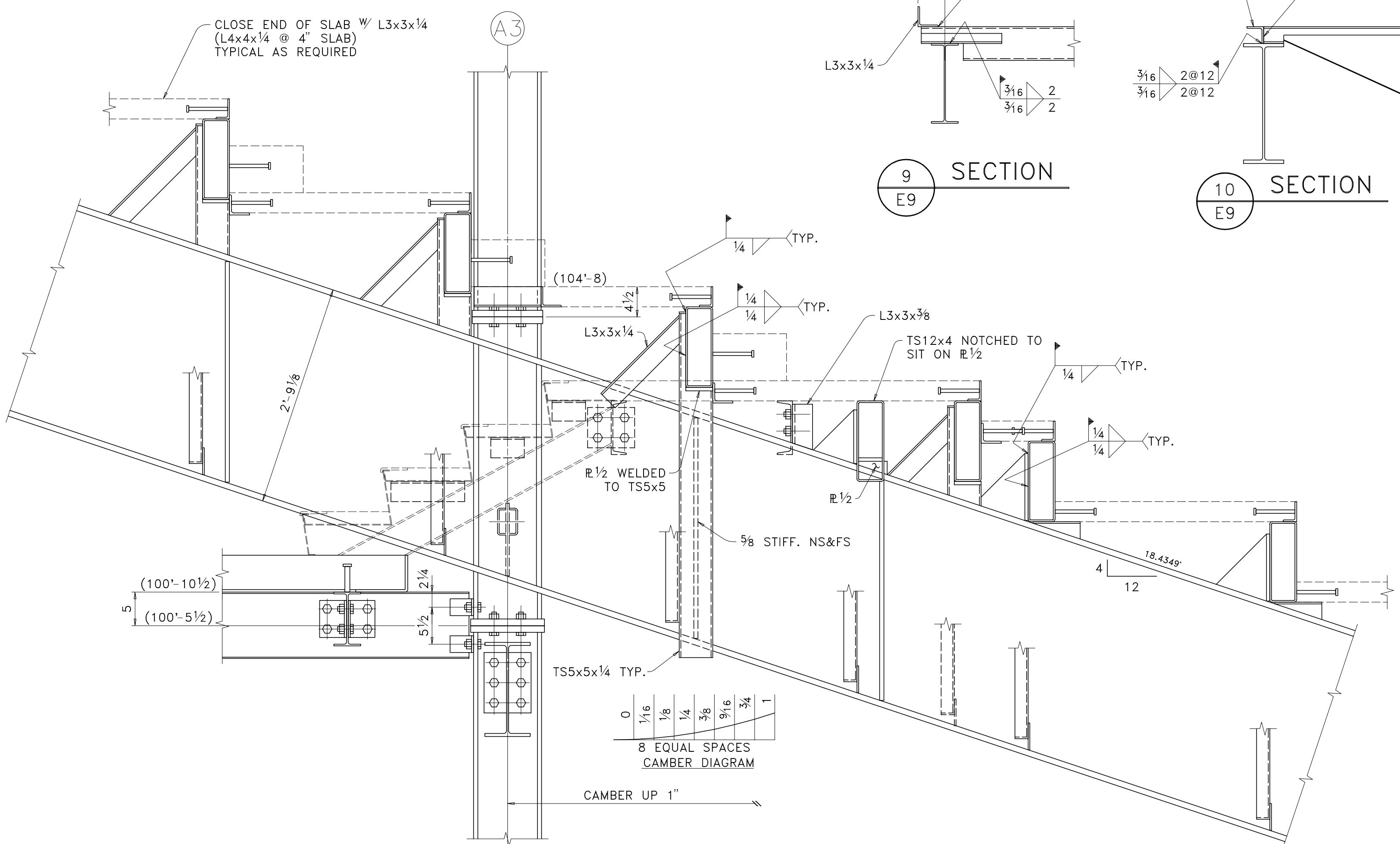
6 SECTION
E9



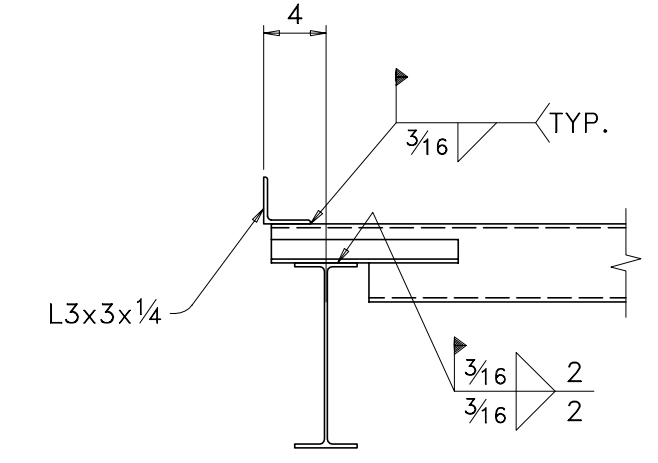
7 SECTION
E9



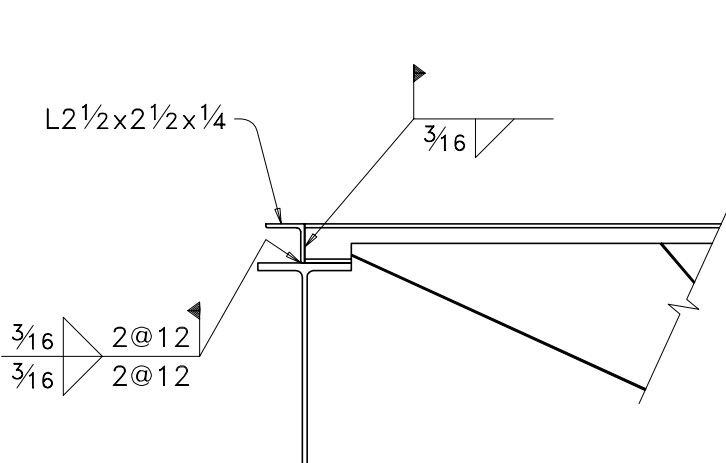
8 SECTION
E9



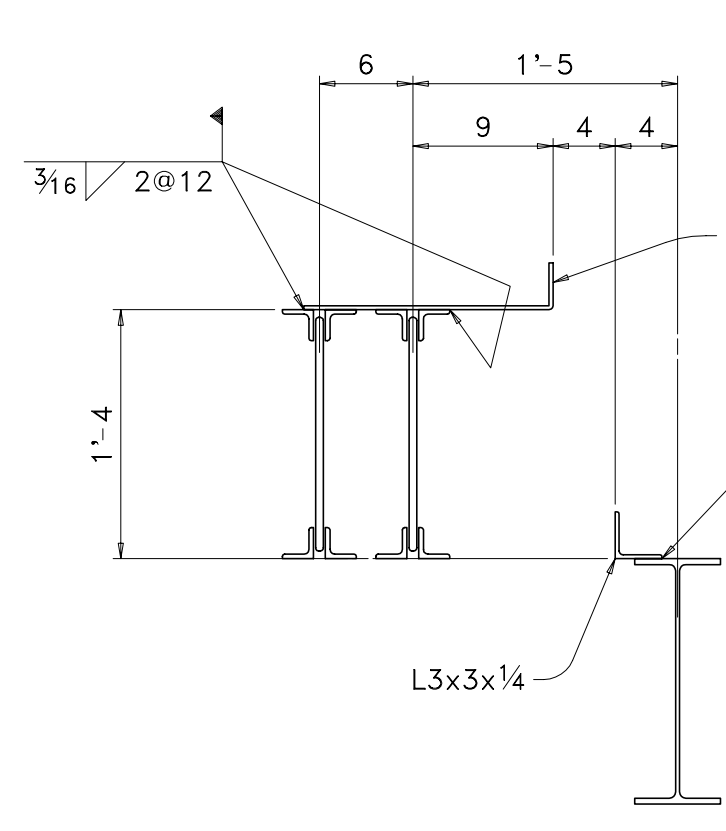
2 SECTION AT TYPICAL BALCONY GIRDER
E9



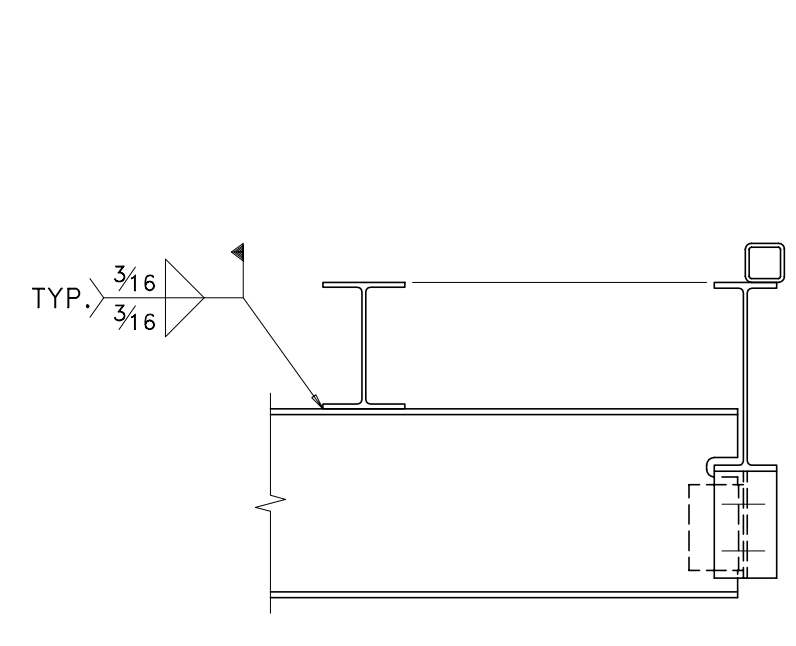
9 SECTION
E9



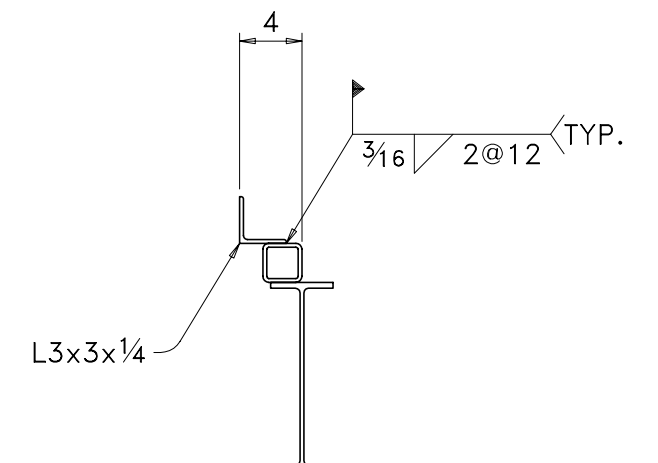
10 SECTION
E9



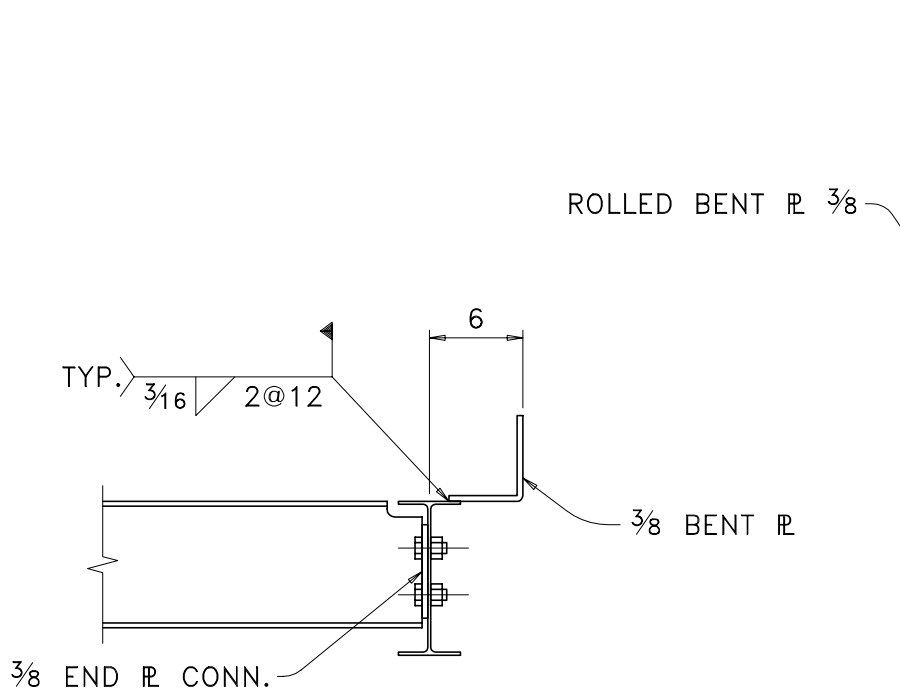
11 SECTION
E9



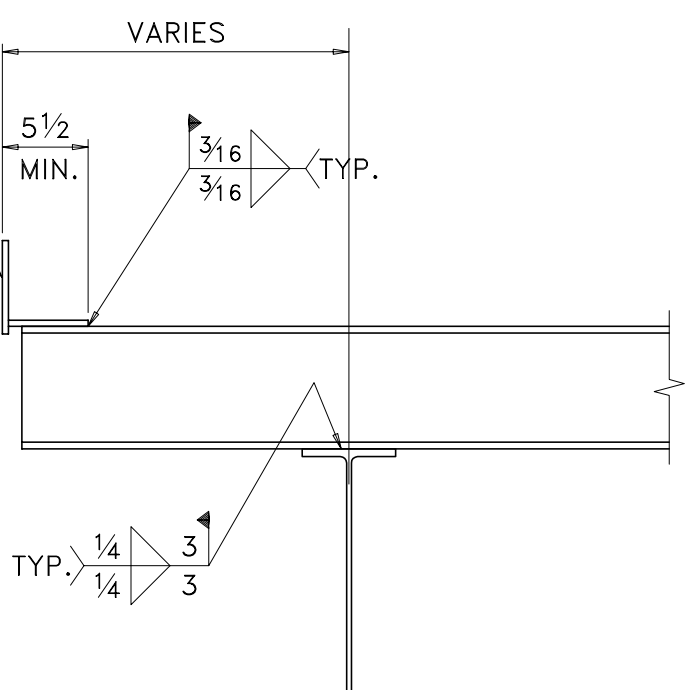
12 SECTION
E9



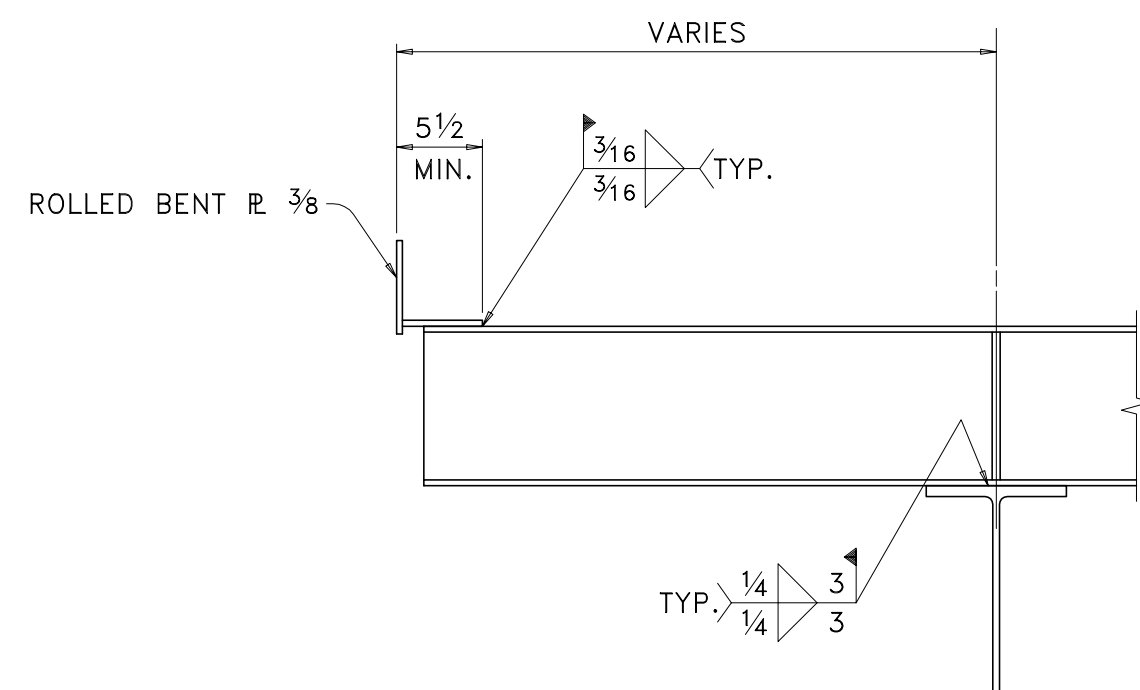
12A SECTION
E9



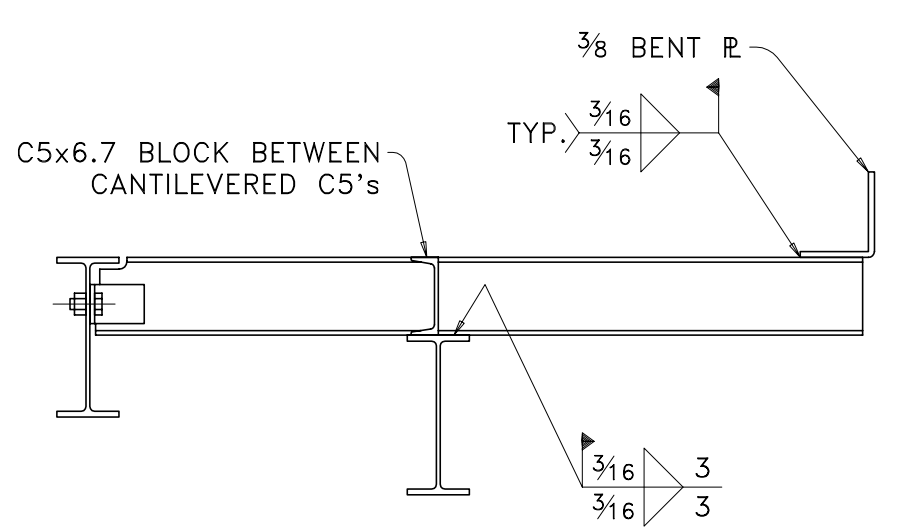
13 SECTION
E9



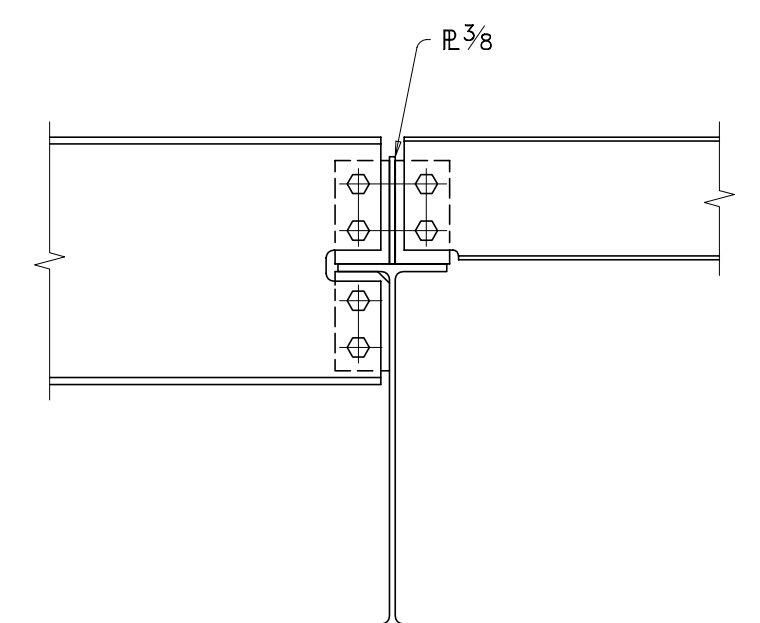
14 SECTION
E9



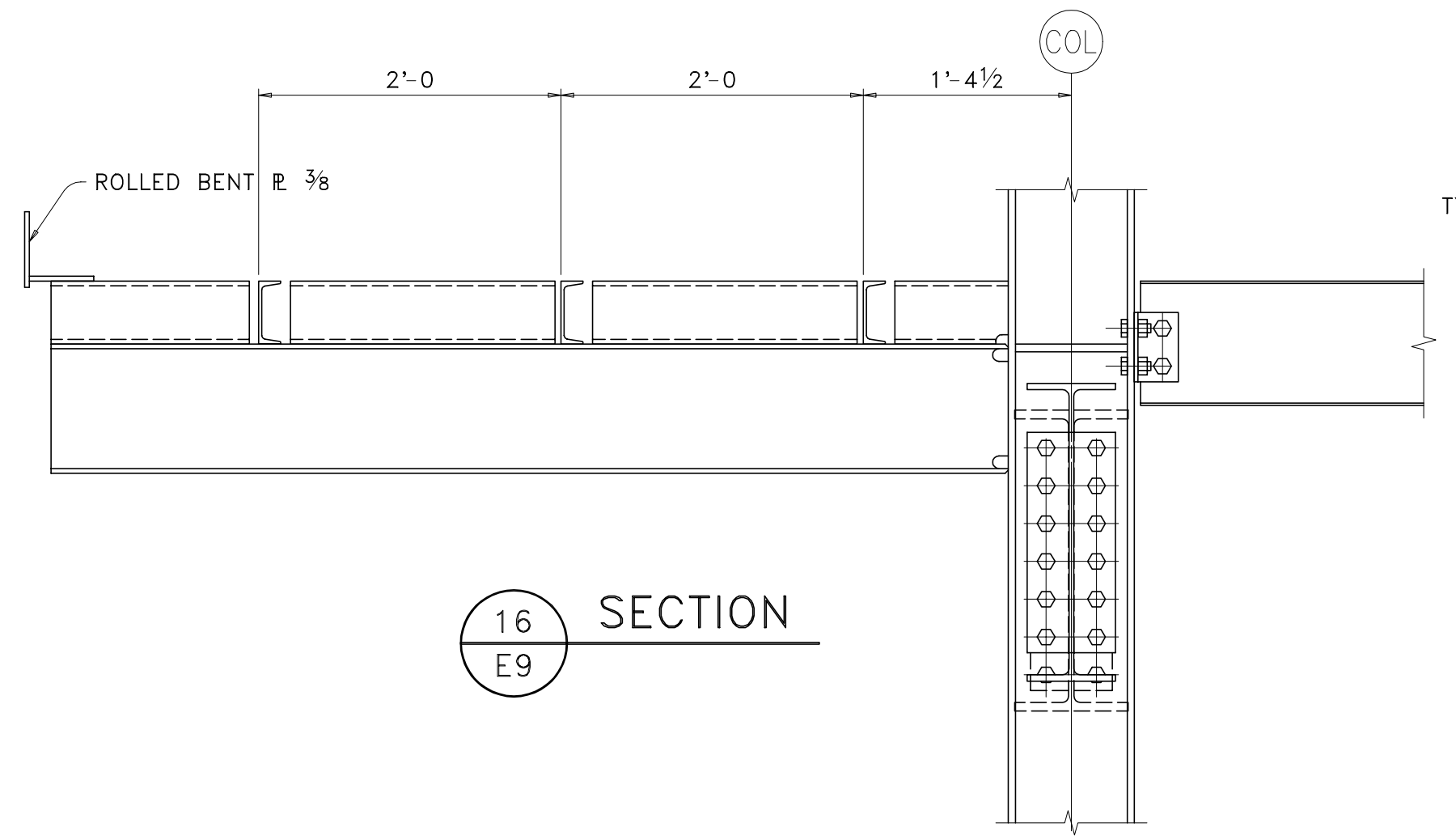
15 SECTION
E9



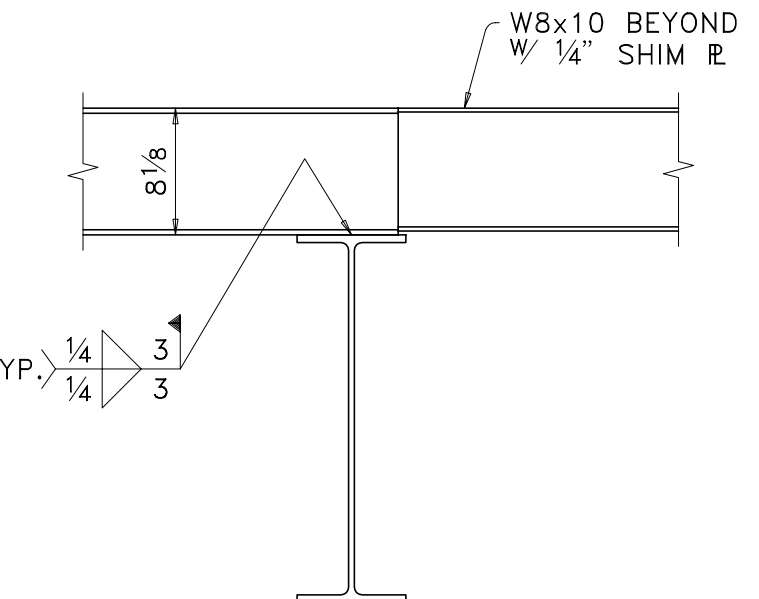
17 SECTION
E9



18 SECTION
E9



16 SECTION
E9



19 SECTION
E9

FABARC will detail and/or design connections not furnished on design drawings; however, such connections developed by FABARC are only to accommodate fabricating shop equipment and procedures. Responsibility for design of the structure, including design of connections, shall remain with the Architect and Engineer of record. FABARC and its detailers, not being designers of steel, shall have no final design responsibilities whatsoever.

ALL ERRORS IN FABRICATION MUST BE REPORTED TO THE FABRICATOR WITHIN 24 HOURS FOR DECISION AS TO THE BEST METHOD OF CORRECTION. BACK CHARGES WILL NOT BE ACCEPTED UNLESS OUR CONSENT IS GIVEN IN ADVANCE IN WRITING.

Fabarc Steel Supply, Inc.									
ANNISTON, ALABAMA									
PRINT RECORD			STRUCTURE PERIMETER CHURCH - DULUTH, GA						
QUANT.	DATE	FOR	DETAIL SECTIONS						
			CONTRACTOR HOAR CONSTRUCTION						
			OWNER PERIMETER CHURCH						
Conns. 3/4" A325 LIB / E70xx Unless Noted			ENG. OR ARCH. BMP ARCHITECTS						
Holes 1 3/16" Unless Noted			REVISIONS		SHOP ORDER		SHEET NO.		
Paint NONE UN			1	2	3	4	4-125		E9
Made BV Date 4/94									
Chkd DG Date									